

# Club Bytes



Brought to you by the Lake Gaston Computer Club



Word of the Month - DuckDuckGo



## What Is DuckDuckGo?

DuckDuckGo is a privacy-focused search engine that doesn't track you. This alternative to Google, Bing, and Yahoo is growing fast. Here's an introduction to DuckDuckGo and a look at how it protects your privacy. [Read More »](#)



Did you replace your aging computer over the holidays or perhaps have an old one in a closet, basement or garage taking up valuable storage space? Consider donating it to the computer club. The repair shop refurbishes old computers for worthy causes in our community and for sale to club members to raise operating funds. What can't be refurbished the shop recycles in a responsible way. The **Repair Shop** in Littleton will accept donations of all types of computers, tablets, and smartphones in any condition during its normal business hours (8:30am-2:30pm) on Mondays.



## Fix Printer and Printing Problems

Printers and printing have long been their own special source of frustration in Windows. From early days to the present, printers have been known to behave oddly — and even stop working on occasion. If you remove the printer then reinstall it, you may find that things start working again. It's a safe and easy first step to fixing printer issues.

To read the full AskLeo article, copy this link into your browser:

<https://askleo.com/fix-printer-problems/>

To view the AskLeo video, copy this link into your browser

<https://youtu.be/ATTqP4yi9W8>



## How to Use Windows 10's Built-in Screen Capture Tool

Windows 10 can record a video of your screen without any third-party software. Here's how to find and use Windows 10's easy-to-use Capture utility to record your display. [Read More »](#)



## Apple warns of "remote attacker" security threat and releases update

**Cassidy McDonald**

Wed, January 27, 2021, 12:56 PM

Apple released iOS 14.4 and iPadOS 14.4 updates on Tuesday after an anonymous researcher found that attackers may be able to remotely hack certain iPhones, iPads and iPods.

On the company's [support page](#), Apple outlined two security threats that have since been fixed in the newest operating system update, version 14.4. Both security threats, Apple said, may have already been exploited.

The company explained that one vulnerability, which is linked to the web browser rendering engine, WebKit, may allow remote hackers access to a device.

Katie Moussouris, CEO and founder of cybersecurity firm Luta Security, said that means an attacker could control a user's phone. "You've zombified that device," she said. "You are controlling it from a distance."

And since the threat is tied to internet browsing, she noted, "Your regular web browsing may cause you to be held compromised, without having to do really much of anything else," she said. "And that's a problem."

A second security threat Apple outlined involves a "malicious application" that may be able to elevate user privileges. In theory, Moussouris said, a malicious actor could exploit this with an app. "It is possible that a vector could be, almost like a sleeper cell of an app," she said. "If you're vulnerable, it tries to exploit it."



# Wi-Fi 6E is coming to the Apple enterprise.

Offering faster networking with little congestion, the now-available Wi-Fi 6E standard is mandatory for faster connections and IoT.

Apple will introduce a faster form of Wi-Fi 6, [Wi-Fi 6E](#), into iPhones starting with the iPhone 13 series, according to the analysts at Barclays. What is this? Why does it matter? And what might this mean for your enterprise?

## **A year in eight days**

Given that most Apple users haven't yet installed Wi-Fi 6 routers in their homes and offices because of the cost of that equipment, news of a follow-up standard may not seem terribly important — particularly after the traumatic year that is the first week of 2021, one of the more benign highlights is that the [Wi-Fi Alliance](#) has begun [certifying Wi-Fi 6E devices](#).

## **Why it matters.**

Wi-Fi 6E comes with all the features of Wi-Fi 6 but extends into the 6GHz frequency band. If you keep up with network provision (and I can't possibly imagine why you wouldn't on such slow news days as these), then you'll know that this frequency was [only recently opened up for public use](#) in some nations (U.S., UK, Europe, Chile, South Korea, UAE).

**[ Keep up on the latest thought leadership, insights, how-to, and analysis on IT through [Computerworld's newsletters](#). ]**

That means traffic in this part of the spectrum is rare, which makes for:



- Less contention and interference.
- Fastest Wi-Fi speed available.
- Full support for Wi-Fi 6. \*See below.

## What is Wi-Fi 6?

“Wi-Fi 6 is built for better performance in congested spaces – so you’ll see performance improved in homes which buffet against neighbor’s networks, better performance in your office, and better performance using Wi-Fi in public spaces, such as (dare I say it) in the conference chamber at WWDC.” -- [The Wi-Fi Alliance](#)

The standard offers greater bandwidth and is far more capable of handling the demands of both video streaming and IoT applications. It's already in use in both the [education](#) and [health](#) sectors.

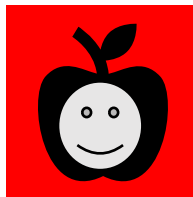
Proponents of the standard claim:

- Gigabit Wi-Fi speeds of up to 5.3Gbps.
- 4x better performance in dense or congested environments.
- Up to 40% higher peak data rates for a single client device.
- 4x better network efficiency.
- Support for up to 50+ devices.
- Better battery life on client devices (such as iPhones).
- You’ll even get better speed on a 2.4GHz network.

Wi-Fi 6E is all of the above, but with the addition of support for the 6GHz spectrum.

Wi-Fi 6 is and was an important improvement when Apple began introducing it with iPhone 11. It’s now supported by all Apple Silicon Macs, iPads, and iPhones — but its existence means absolutely nothing unless you are on a network that supports it. That means deployment is taking place as [routers are upgraded or replaced](#).

If you’re in the market for a new router you [should invest in a system](#) that supports Wi-Fi 6E. Doing so will bring you all the benefits of the Wi-Fi 6 alongside support for 6E, setting you up for iPhones and other Apple devices that support either or both. You’ll get better support for IoT deployments, and you’ll be able to doom scroll faster to your heart’s content.





## 8 types of phishing attacks and how to identify them

By [Fahmida Y. Rashid](#)

Do you know your spear phishing and vishing from your whaling and clone phishing? We explain how to recognize each type of threat.

Every data breach and online attack seems to involve some kind of phishing attempt to steal password credentials, to launch fraudulent transactions, or to trick someone into downloading malware. Indeed, Verizon's [2020 Data Breach Investigations Report](#) finds that phishing is the top threat action associated with breaches.

Enterprises regularly remind users to beware of [phishing attacks](#), but many users don't really know how to recognize them. And humans tend to be bad at recognizing scams.

Use Ctrl+ Click and read the article to recognize these nefarious methods to make your life miserable.

<https://www.csoonline.com/article/3234716/8-types-of-phishing-attacks-and-how-to-identify-them.html>



### Zero Trust

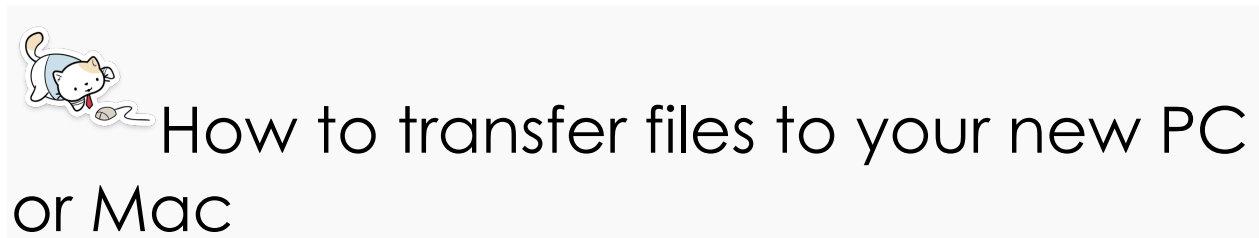
A model for more effective security. The technologies that support Zero Trust are moving into the mainstream. Here's why security experts say it might be the best way to stop data breaches.

Zero Trust is a security concept centered on the belief that organizations should not automatically trust anything *inside* or *outside* its perimeters and instead must verify anything and everything trying to connect to its systems before granting access. This approach leverages advanced technologies such as multifactor authentication, identity, and access management (IAM), and next generation [endpoint security](#) technology to verify the user's identity and maintain system security. The traditional approach automatically trusted users and endpoints within the organization's perimeters, putting the organization at risk from malicious internal actors and allowing unauthorized users wide-reaching access once inside.

With more users working from remote access, home networks being linked, users sending data to the cloud it is becoming clear that security needs to go to a different platform. VPN's may not be enough.

Please use Ctrl + click on the link to read more on this subject.

[https://www.crowdstrike.com/epp-101/zero-trust-security/?utm\\_campaign=dsa&utm\\_content=us&utm\\_medium=sem&utm\\_source=bing&utm\\_term=crowdstrike&msclkid=d3998cd3f0101e4f4769ecd61437e065](https://www.crowdstrike.com/epp-101/zero-trust-security/?utm_campaign=dsa&utm_content=us&utm_medium=sem&utm_source=bing&utm_term=crowdstrike&msclkid=d3998cd3f0101e4f4769ecd61437e065)



<https://www.youtube.com/watch?v=AZli0dtrspE&feature=youtu.be>

Watch this YouTube video. You can always pull it up and pause it if you want to take notes. There are several ways to transfer your files from your old computer to your new one. You can back up your files to the cloud or a hard drive, or you can use a few different applications. You can even transfer files from a PC to a new Mac. Learn how to move files from one computer to another and what to do with your old computer once you're finished.



## **Why You May Be Warned About Windows 10 “End of Service” and What to Do About It**

If Windows 10 warns when it's coming to “end of service”, what does that really mean if Windows 10 is always being updated?

Windows 10 does indeed auto-update, to the frustration of many. It's difficult to stop it from doing so.

And yet, this warning you're getting would indicate it's about to stop.

The difference is in the definition of “version” — what version you have, what versions are available, and what versions support your computer. Windows 10 end of service could arrive sooner than you think.

Microsoft releases new versions of Windows 10 roughly every six months. Each release is supported for 18 months. Always updating to the latest Windows 10 version assures it will continue to be supported for another 18 months. Once you reach an update version incompatible with your machine you can't update further, effectively reaching Windows 10 end of service for your machine.

When Microsoft talks about the current “version” of Windows, they're referring to the major or “feature update” of Windows 10 you're running. To verify which version you have installed, type “winver” into your search bar and it will produce a dialog box indicating which version you have installed. This will produce the box shown below.





This example shows “Version 20H2”

The version numbers aren't so much numbers as they are the approximate date when a version was first released. It's probably more accurate to call it the date the version was finished, because it's typically released a month or more after that date.

For example:

- 20H2 is the second half (H2) of 2020 version. It was released in October of 2020.

This version will be in affect until May 2022.

Not all versions are supported forever. Each version (the half-yearly kind) is supported for only 18 months at which point they reach “end of service”

In theory, that's not a problem because there's a new version you can upgrade to every six months or so that resets the clock. Windows 10 support lasts “forever” as long as you keep updating to new versions of Windows 10 as they're released.

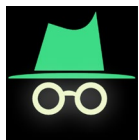
If you can.

If you keep getting Windows 10 feature updates, your hardware will be supported for a long time, but not forever.

At some point, a feature update will come along that is incompatible with something on your machine. Some unique combination of hardware, devices, or software will prevent Windows 10 from installing the most recent feature update. The good news is that so far, this appears infrequent. The bad news is that it is expected to increase, and Microsoft's not been great about letting us know exactly what prevents a feature update from installing.

The solution is to first see if a clean install of Windows 10 with the latest feature update will work. If it does, you can reinstall software and deal with any incompatibilities if, or as, they arise.

If the clean install of Windows with the most recent feature update fails, that may be as far as your machine will go. Eighteen months after that update's release, your copy of Windows 10 will no longer be supported. You'll likely get that "end of service" warning repeatedly.



### **Android privacy feature you probably forget to use.**

**This underappreciated Android gem can protect your privacy and make your phone significantly more secure, but it's up to you to dust it off and use it.**

It's amazing how many useful Android features get buried in the operating system and then forgotten over time.

When you stop and think about it, it's also kind of inevitable: With every passing year, Android grows increasingly robust and complex, as more advanced options make their way into the software. So, it's only logical that certain elements will become out of sight and out of mind and get lost in the shuffle somewhere along the way.

One such item jumped out at me the other day, triggering an immediate "AHAH!" in this rusty ol' noggin of mine as I remembered its existence and then scolded myself for forgetting to use it all this time. It's a little somethin' called Android Guest Mode, and it first showed up way back in the Android 5.0 (Lollipop) era of 2014.

Guest Mode, in case you've also forgotten, does exactly what you'd expect: It gives you an on-demand way to switch your phone into a blank-slate-like state, where your personal apps, accounts, and data are all securely tucked away and you instead get an out-of-the-box-like experience, with only the basic preinstalled system apps in place. It's almost like an incognito mode of sorts, applied to your entire phone: All your regular stuff is gone, and nothing done in that environment has any impact on your standard smartphone setup. The implications for that are enormous. The biggest realistic threat with smartphone security, after all, isn't the coming invasion of scary-sounding malware monsters (which, as we've discussed to death 'round these parts, are more about sensationalism and security software sales than any pressing, practical danger). Nope — it's your own negligence and occasional lapse in judgment. And even if you take every possible step to protect your privacy and strengthen your phone's security, all it takes is a single, brief pass-off of your device to the wrong person to send all your best-laid efforts swirling down the drain. Whether we're talking about sensitive company data or your own personal photos, messages, and maybe even browsing history, it doesn't take long for the wrong set of eyes to see something they shouldn't — whether it's deliberate or by mistake. That's exactly the sort of slip-up Android's Guest Mode can prevent — and best of all? Once you remember that it's there, it's simple as can be to deploy.

<https://www.computerworld.com/article/3586570/android-privacy-feature.html>

**Use Ctrl + Click to see the entire article on how to make your android phone more secure. It's easy!**



## Tip of the Day:

# Leave Your Computer Running When Plugged In

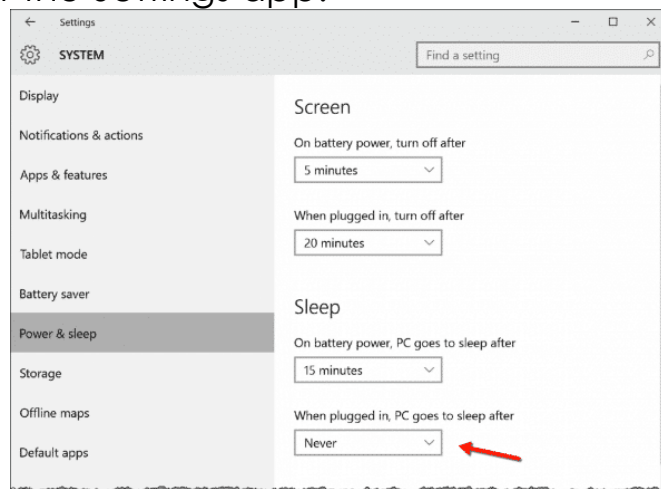
By Ask Leo

Sleep, while more reliable than in the past, can still be a problem if you expect your machine to stay on when plugged in.

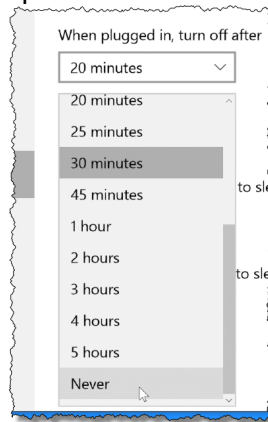
It's no secret that I'm not a huge fan of "sleep". I'm sure it works great these days, but early problems with it — frustrating problems and inconsistent behavior — trained me to avoid it. It's only recently I've started to give it a chance. (And, indeed, it does seem better.)

I prefer to keep my machine running if it's plugged in. To me, sleep is mostly about saving power. When you're plugged in, that's not an issue, unless you're attempting to minimize electricity use. Leaving the machine running when plugged in also allows me to access it remotely.

One of the first things I did with my new computer was to turn off the settings allowing the computer to go to sleep when plugged in. Search for "power", and you'll find "**Power & sleep settings**" in the list of results; click on that. Alternately, locate "Power & sleep settings" in Control Panel or the Settings app.



Look for the setting “When plugged in, PC goes to sleep after”, which will have a default of some number of minutes. Click on the drop-down list; one of the options will be “**Never**”.



Click on that and close the options app. Now, as long as you keep it plugged in and powered on, your computer will keep running.

Note from the Club Repair Shop: There is another advantage of your computer never going to sleep. Microsoft sends Windows updates in the middle of the night. They will be downloaded to your computer while you sleep, instead of downloading at the same time that you are working on your computer which slows up everything.



## Tour the World with 12 Months of Virtual Museum Trips

If you've ever wanted to visit some of the world's most famous museums, but never had the chance, now's your opportunity! Many iconic museums are offering virtual tours and specially curated digital exhibits specifically for guests who can't get there in person. [Read More »](#)



# Google to cut off other Chromium-based browsers from access to services such as Sync

*Senior Reporter Gregg Keizer*

Access to what the company called "our private Chrome APIs" will be blocked starting March 15.

Google plans to revoke others' Chromium-based browsers' access to a long list of APIs that power such popular services as bookmark and settings synchronization.

"We discovered that some third-party Chromium-based browsers were able to integrate Google features, such as Chrome Sync and Click to Call, that are only intended for Google's use," Jochen Eisinger, Chrome engineering director, wrote in a [Jan. 15 post](#) to a company blog.

Access to what Eisinger labeled "our private Chrome APIs" will be blocked starting March 15.

Although Eisinger mentioned only two APIs by name — Google Sync and Click to Call — as effected by the new rule, a link he offered led to a [page that lists 20 APIs](#), including those for calling on services like Google Translate and Safe Browsing. The latter warns users when they try to steer to potentially dangerous websites.

Some or all of those APIs may also be out of bounds come the middle of March.

"Many of the Google APIs used by Chromium code are specific to Google Chrome and not intended for use in derived products," that page stated.

Eisinger did not specify which APIs would be out of bounds to all non-Google browsers built atop Chromium, nor which browsers had improperly integrated Google services into their end product.

It's almost certain that Edge, the year-old Chromium-based browser developed and maintained by Microsoft — and the one with the largest share of the market absent Chrome — was not among that group. Not only did Microsoft make a point to tell users that it was stripping Google's services from Chromium and replacing them with its own homegrown alternatives, but it could recreate those services it did not already have much easier than smaller browser makers.

Several browsers are, like Edge, founded on Chromium and may have attracted the ire of Google, among them Brave, Opera, Epic and Vivaldi.

It was unclear what prompted Google to throw the API book at its small fry rivals, which collectively don't account for more than a rounding error on Chrome's current more-than-dominant share. That others can build browsers atop Chromium was always part of the deal, what with Google's original decision to take the open-source route for the project.

Hijacking Google's own services, though, was likely a borrowing too far.



## Microsoft cheat sheets: Dive into Windows and Office apps

**Office 2016 and 2019** By [Valerie Potter](#)

Managing Editor, Features, Computerworld | DEC 18, 2020 3:00 AM PST

**Our website has the most recent information on all the applications. We didn't want our members to think we had forgotten about the other software that is still supported by Microsoft and in use. So here are some helpful guides for you. Remember to use Ctrl + Click on the red highlighted words to get to the URL where the Cheat Sheets are located.**

## **Word 2016 and 2019 cheat sheet**

Learn how to use Word's live collaborative editing features, Tell Me and Smart Lookup, and the new Translator pane in Word 2019. Also included is a list of [handy keyboard shortcuts for Word 2016 and 2019](#). If you just want to know where to find various commands on the Ribbon, download our [Word 2016 and 2019 Ribbon quick reference](#).

## **Excel 2016 and 2019 cheat sheet**

Now updated for Excel 2019, our guide covers several useful chart types introduced in Excel 2016 and Excel 2019 for Windows, as well as how to use several impressive new data analysis tools. We've also got a list of [handy keyboard shortcuts in Excel](#), as well as the [Excel 2016 and 2019 Ribbon quick reference](#).

## **PowerPoint 2016 and 2019 cheat sheet**

Like Word and Excel, PowerPoint 2016 and PowerPoint 2019 for Windows offer Tell Me, Smart Lookup, live collaborative editing, and a slew of new chart types. We cover all that plus some handy features introduced in PowerPoint 2019 — not to mention our list of [keyboard shortcuts for PowerPoint](#) and the [PowerPoint 2016 and 2019 Ribbon quick reference](#).

## **Outlook 2016 cheat sheet**

Outlook 2016 for Windows has been enhanced with Smart Lookup, Tell Me, and features to help you find files you want to attach and keep a tidy inbox. And don't miss our list of [keyboard shortcuts for Outlook 2016](#) and the [Outlook 2016 Ribbon quick reference](#).

## **Office 2013**

### **Word 2013 cheat sheet**

Among the major features introduced in Word 2013 are a Start screen, a Design tab, Read Mode, and OneDrive sync. Our guide



covers how to use them all and provides [handy keyboard shortcuts for Word 2013](#). There's also a [Word 2013 Ribbon quick reference](#).

## **Office 2010**

### **[Outlook 2010 cheat sheet](#)**

The Ribbon was only half-present in Outlook 2007, but in Outlook 2010 it's ubiquitous. Other notable changes include Conversation View to group email messages, Schedule View for scheduling meetings, and an enhanced search function. We show you how to use them all, provide some [handy keyboard shortcuts for Outlook 2010](#) and detail [where old Outlook 2003 commands are located in Outlook 2010](#).

### **[PowerPoint 2010 cheat sheet](#)**

Learn how to use PowerPoint 2010's new multimedia editing tools, sharing options and other handy features. As usual, we've got [keyboard shortcuts for PowerPoint 2010](#) and a [guide to finding old PowerPoint 2003 commands on the PowerPoint 2010 Ribbon](#).

### **[Excel 2010 cheat sheet](#)**

Excel 2010 introduces Sparklines, Slicers, and other enhancements to PivotTables and PivotCharts. Find out how to use those, along with [keyboard shortcuts for Excel 2010](#) and our [quick reference for finding your favorite commands on the Excel 2010 Ribbon](#).

### **[Word 2010 cheat sheet](#)**

Learn how to use Word 2010's new Navigation pane, image editing tools, text effects and other new features. Also see the list of [handy keyboard shortcuts for Word 2010](#) and our [Word 2010 Ribbon quick reference charts](#).

## Windows 8

### Windows 8 cheat sheet

Not many people are still using this nightmare of an operating system, which radically overhauled the classic Windows interface to make it more like a mobile OS. But just in case, here's help finding your way around.